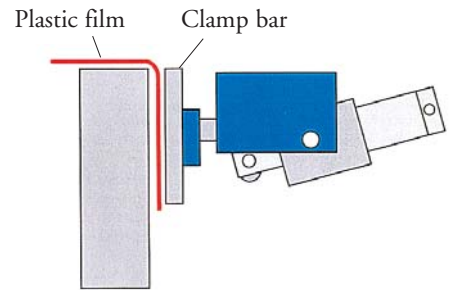
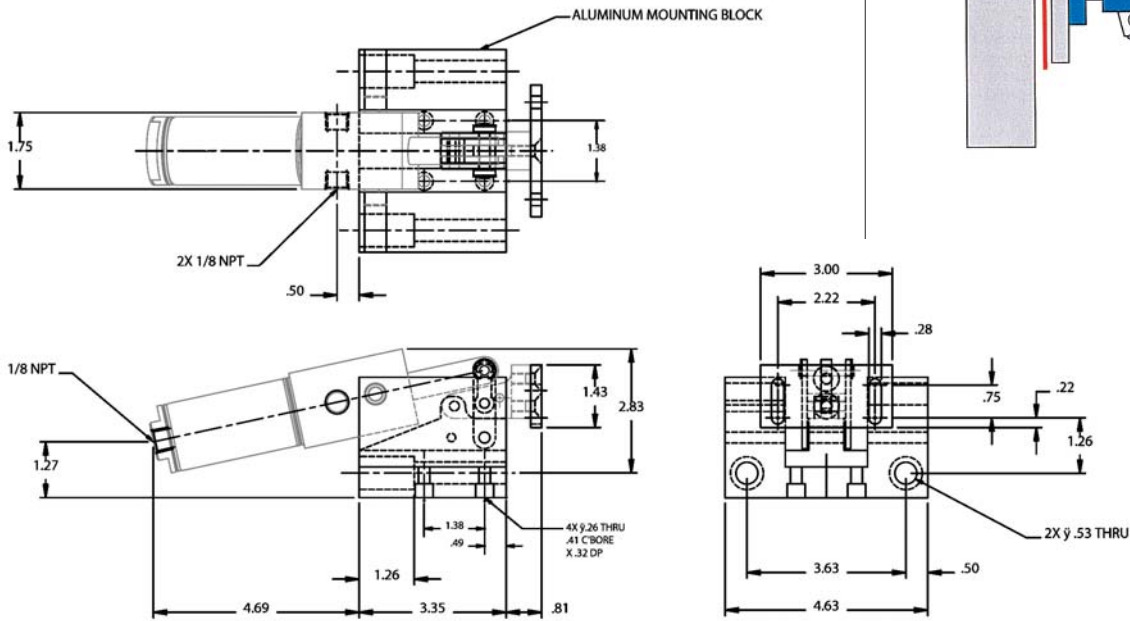




## Perimeter Clamp (Plastic Molds)

A customer in the plastic molding industry was fed up with constantly replacing worn out clamps. Bimba's team, with its technical expertise, developed a toggle clamp with an aluminum mounting block and a 1 1/16" bore pneumatic cylinder. The Perimeter Clamp was designed to maximize long life and be easily repairable.



Contact Bimba at 1-800-44-BIMBA or visit [bimba.com/distrib/distrib.htm](http://bimba.com/distrib/distrib.htm) to search for your local distributor

[www.bimba.com/solutionsshop](http://www.bimba.com/solutionsshop)